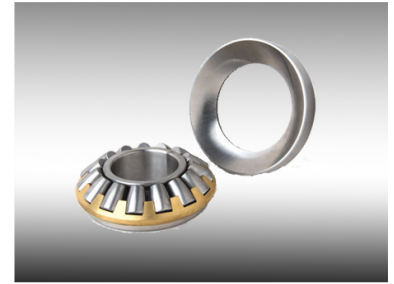
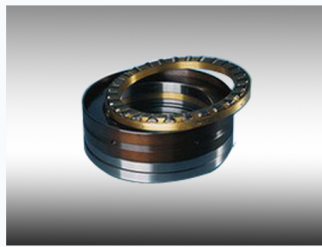


Thrust Roller Bearing for Axial Load Support

This thrust roller bearing is designed for high axial loads and smooth operation. It features hardened steel races and cylindrical rollers for optimal load distribution and reduced friction.



ADDITIONAL IMAGES



Product Overview

High-Performance Axial Thrust Support

These precision thrust roller bearings are engineered to handle high axial loads in demanding industrial environments. Available in a wide range of precision classes from P0 to P4, they provide exceptional durability through the use of high-quality GCr15 and GCr15SiMn steel. With flexible cage options including machined brass and steel, these bearings are ideal for heavy-duty machinery requiring reliable performance and smooth operation.

Technical Specifications

Size Range

100 mm

Inner Diameter

1580 mm

Outer Diameter

Cage Material & Design

- One-piece machined brass (M or MP)
- Two-piece machined brass (M)
- One-piece machined steel (F)

Precision Levels

P0, P4, P5, P6

Material

GCr15, GCr15SiMn

Logistics and Support

Payment Options

- 100% L/C at sight
- 30% T/T deposit, 70% balance before shipment
- 30% T/T in advance, 70% L/C at sight

Delivery Lead Time

45 to 50 days after deposit