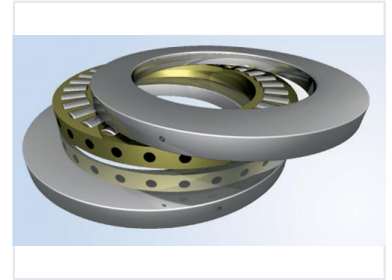


Thrust Bearing Assembly for Machine Tools

This precision thrust bearing assembly is designed for machine tools. It features upper and lower races with a cage containing cylindrical rollers to handle axial loads and facilitate smooth rotational movement.



Product Overview

Precision Engineering for Axial Loads

This thrust bearing assembly is designed specifically for machine tool applications where high axial load capacity is essential. Featuring a robust construction with upper and lower races and a precision-engineered cage containing cylindrical rollers, it ensures smooth rotational movement and enhanced stability. This component is built to withstand rigorous industrial environments, providing reliable performance for heavy-duty machinery.

Technical Specifications

Load Direction

Axial

Key Components

- Upper Race
- Lower Race
- Roller Cage
- Cylindrical Rollers

Bearing Type

Cylindrical Roller Thrust Bearing

Primary Application

Machine Tools, Industrial Machinery, Rotational Equipment