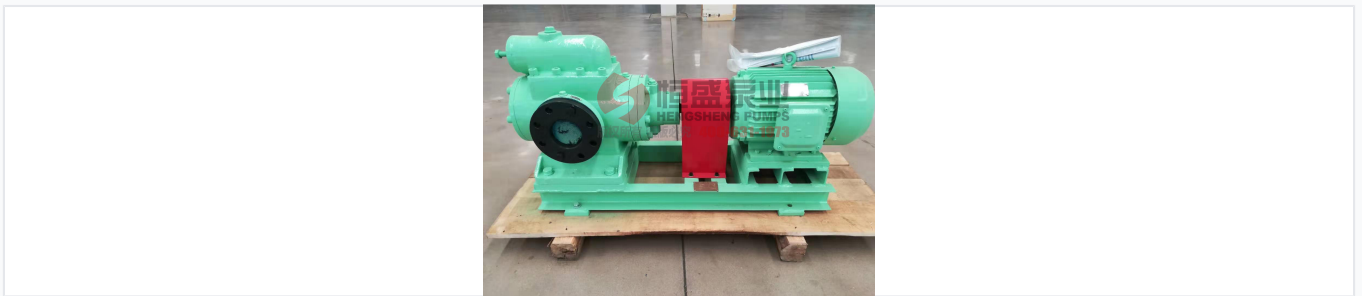


Three Screw Pump for Fluid Transfer

This three screw pump ensures continuous, straight-line fluid transfer, minimizing pulsation. Its design provides high pressure and efficiency in a compact, easy-to-maintain structure.



Product Overview



Full pump assembly featuring the electric motor, protective coupling guard, and flanged connections on a heavy-duty base.

High-Efficiency Three Screw Pump

The 3G series is a high-performance positive displacement pump designed for continuous, straight-line fluid transport without pulsation or stirring. It features a simple, robust structure that is easy to disassemble, offering a compact and lightweight solution for demanding industrial environments. With slight wear characteristics and a long service life, this pump ensures reliable operation with minimal vibration and noise.

Performance Metrics

Key Performance Ratings

123 m³/h

Max Flow Rate

2.5 Mpa

Max Pressure

150

Max Temperature

Applicable Viscosity	5-760 cSt
Flow Range	0.6 - 123 m ³ /h
Pressure Range	0.6 - 2.5 Mpa

Applications

Target Industries	Fuel Transportation, Hydraulic Engineering, Marine Engineering, Petrochemical
-------------------	---

Technical Features



Detailed internal configuration showing the main and slave screws, bearings, and seals for maintenance reference.

Core Advantages

- Continuous straight-line transport
- Non-pulsating and non-stirring flow
- Low vibration and noise levels
- High pressure efficiency
- Simple structure for easy maintenance
- Long service life with minimal wear

Sealing Options

Mechanical Seal • Magnetic Drive • Zero Leakage Structure

Drive & Rotation

Electric motor drive via claw-type coupling; clockwise rotation from spindle extension.

Material Specifications

Screw Materials

16MnCrS5, 40Cr, 45, 38CrMoAL

Pump Body Materials

HT200, QT450-10, ZCuSn10PI, ZG270-500

Model Identification

Model Coding Example

3G25 × 4-46 (3G: Three Screw Pump)