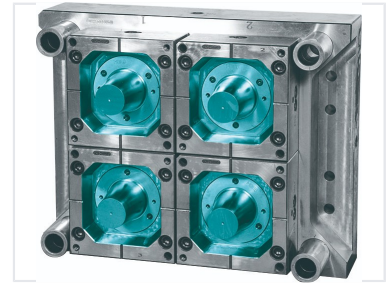


# Thin Wall Container Mold

This mold is designed with an optimized structure to ensure high repeat accuracy and minimal deformation during long production runs. Applied with a high-speed injection machine and robot, this thin-wall container mold significantly improves production efficiency.



## ADDITIONAL IMAGES



## Product Overview

### High-Efficiency Thin Wall Container Solutions

This high-precision mold is expertly engineered for the manufacturing of thin-wall containers and cups, ensuring superior repeat accuracy and minimal deformation. Designed for high-speed injection machines and automated robotic systems, it optimizes production efficiency to maintain a competitive market edge. Advanced cooling channels integrated into the structure guarantee consistent thermal management and high-quality output throughout long-run cycles.

## Technical Specifications

### Key Features

- Optimized structural design for minimal deformation
- High-speed injection machine compatibility
- Advanced cooling performance
- Multi-cavity capability for high-volume output
- Automated ejector system integration

### Construction

High-grade steel, Multi-cavity, High-precision engineering

## Performance Metrics

### Operational Metrics

**101 H-101D**

Series Model ID