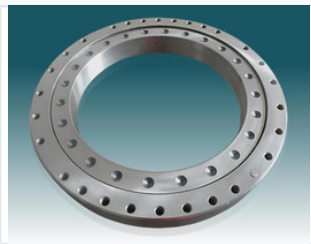


Thin Section Slewing Ring Bearing with Internal/External Gear

This thin section slewing ring bearing is designed for lightweight and compact applications. It is available with internal or external gear options for direct drive integration.



ADDITIONAL IMAGES



Product Overview

Compact Rotational Solutions

These thin-section and light-type slewing ring bearings are engineered for applications where space and weight are critical constraints. They offer versatile integration options with both internal and external gear configurations, making them ideal for direct drive systems. Built for precision and reliability, these bearings are suitable for robotics, rotary tables, and light-duty industrial machinery.

Technical Specifications

Available Series

- XD-230 series (Light type, no gear)
- XD-231 series (Light type, external gear)
- XD-232 series (Light type, internal gear)
- XD-060 series (Thin section, no gear)
- XD-061 series (Thin section, external gear)
- XD-062 series (Thin section, internal gear)

Available Gear Configurations

No Gear, External Gear, Internal Gear

Applications

Typical Applications

Rotary Tables • Robotics • Welding Positioners • Light-duty Cranes • Precision Machinery

Performance Features

Performance Highlights

- Lightweight and compact design
- High-grade steel construction
- Precision-engineered raceways
- Minimal rotational friction
- Direct drive integration capability