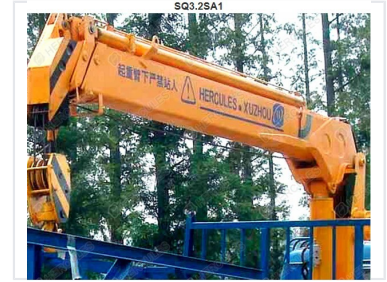


# Telescopic Boom Truck Crane

Truck mounted cranes are suitable for use in transportation, oil, balance check, telecommunications, electricity, municipal services and other applications. These cranes are the preferred equipment for modern logistics operations.



## Overview

### Telescopic Boom Truck-mounted Crane

The SQ3.2SA1 is a high-performance telescopic boom truck-mounted crane designed for versatile industrial and construction lifting tasks. Featuring a robust hydraulic system, it offers precise load handling and an extended reach through its telescopic design. This unit is built for easy vehicle integration, providing excellent mobility and flexibility for professional lifting operations.

## Performance Metrics

### Key Performance Indicators

**3200 Kg**

Max Lifting Capacity

**6.7 T.m**

Max Lifting Moment

**400 °**

Rotation Angle

## Hydraulic Specifications

### Hydraulic System Details

Parameter	Value
Rated Pressure	20 MPa
Max Oil Flow	25 L/min
Oil Tank Capacity	60 L

## Technical Specifications

### Technical Data

- Model: SQ3.2SA1
- Recommended Power: 12 kW
- Crane Weight: 1150 Kg
- Installation Space Required: 850 mm