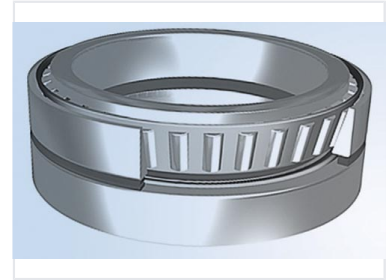


Tapered Roller Bearing for Radial and Axial Loads

This tapered roller bearing is engineered to handle both radial and axial loads efficiently. Its design features an inner ring (cone), outer ring (cup), tapered rollers, and a cage, making it ideal for high-load applications.



Product Overview

Tapered Roller Bearing Functionality

This tapered roller bearing is engineered to accommodate both radial and axial loads simultaneously, making it a versatile component for demanding mechanical systems. The assembly features an inner ring (cone), an outer ring (cup), tapered rollers, and a cage, all working in unison to ensure smooth operation under high-load conditions. Its robust design is specifically suited for integration into automotive, industrial, and heavy machinery applications where reliability is critical.

Technical Specifications

Components

- Inner ring (cone)
- Outer ring (cup)
- Tapered rollers
- Cage

Load Handling

Radial Load, Axial Load

Application Areas

Primary Applications

Automotive • Industrial Machinery • Heavy Equipment