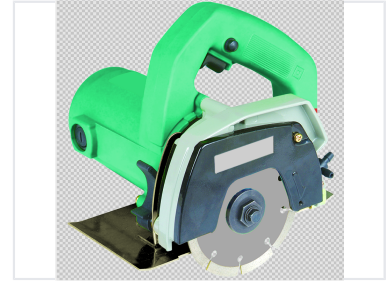


# Stone and Tile Cutting Machine

This stone cutting machine is designed for precise cutting of stone and tile. It features a robust motor, a water cooling system, and adjustable cutting depth for versatile and efficient operation.



## Product Overview

### Professional Stone and Tile Cutting

The CM4SA stone cutting machine is a powerful and precise tool engineered for cutting various types of stone and tile. It features a robust motor for efficient performance, a water cooling system to minimize dust and extend blade longevity, and an adjustable cutting depth for maximum versatility. Designed with a sturdy base and ergonomic controls, it ensures stability and comfort for professional applications.

## Technical Specifications

Cooling System	Yes
Cutting Depth	Adjustable

## Features

### Key Features

- Robust motor for efficient cutting
- Integrated water cooling system
- Adjustable cutting depth
- Sturdy base for stability
- Ergonomic design

## Applications

Suitable For	Stone Cutting, Tile Cutting, Professional Use, DIY Applications
--------------	---