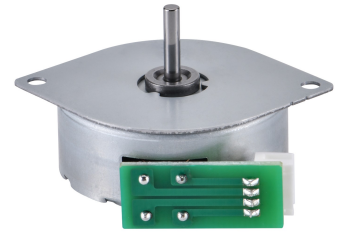


Stepper Motor - 24V, 3.75° Step Angle

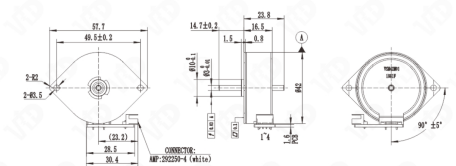
This stepper motor is designed for precise motion control applications. It features a metal housing, mounting flange, and a PCB with a connector for easy integration.



Overview

型号 ITEM NAME	额定电压 RATED VOLTAGE	电阻 RESISTANCE	驱动方式 DRIVE MODE	步距角 STEP ANGLE	最大启动频率 MAX SELF-START FREQUENCY	最大连续响应频率 MAX CONTINUOUS RESPONSE FREQUENCY	引入力矩 INTRODUCING TORQUE	脱出力矩 TRIPPING TORQUE
VSM42	24V	7.6Ω	2-2	3.75°	1000PPS	2000PPS	430gf-cm	490gf-cm

规格参考 Specification



Technical diagram and specification summary for the VSM42 motor series.

VSM42 Stepper Motor

The VSM42 is a high-precision stepper motor engineered for reliable motion control in diverse automation and robotics environments. Operating at a rated voltage of 24V, it features a 3.75° step angle and a robust metallic construction for consistent performance. The unit is designed for seamless integration with an integrated PCB and a quick-connect AMP:292250-4 connector.

Electrical Specifications

Rated Voltage	24 V
Resistance	7.6 Ω
Drive Mode	2-2

Performance Metrics

Operational Performance

3.75°
Step Angle

1000 PPS
Max Self-Start Frequency

2000 PPS
Max Continuous Response Frequency

Torque Specifications

Type	Force
Introducing Torque	430 gf-cm
Tripping Torque	490 gf-cm

Physical and Integration

Connector Type	AMP:292250-4 (White)
Design Features	Metal Housing, Mounting Flange, PCB Integrated, Compact Design