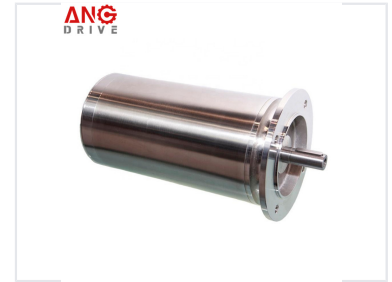
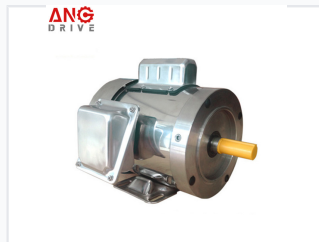


Stainless Steel Washdown Electric Motor

This AC electric motor is constructed from stainless steel for durability in demanding washdown environments. It is UL approved and NEMA compliant, offering reliable performance with IP69-rated waterproof protection.



ADDITIONAL IMAGES



Product Overview



High-Performance Washdown Solution

This stainless steel electric motor is engineered for reliability in highly corrosive and hygienic environments. Featuring an IP69-rated smooth exterior, it is perfectly suited for food processing and packaging applications where frequent, high-pressure washdowns are required. The design supports both NEMA and IEC dimension standards, providing versatile integration for global industrial systems.

Technical Specifications

Available Poles

- 2
- 4
- 6
- 8

Power Range	1/4HP to 30HP
Frame Standards	IEC 63-90, NEMA 56, NEMA 140T-280
Phase Configuration	Single or Three phase
Voltage Rating	(208-230) 230/460V

Environmental & Protection

Protection Rating IP69	
Cooling Method	TENV or TEFC
Ambient Temperature Range	-15 to +40 °C
Housing Material	Stainless Steel 304
Mounting Configurations	B3, B5, B14, B34, B35

Compliance

Certifications	UL, CE
----------------	--------