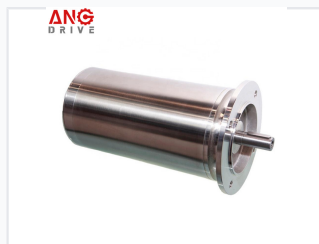
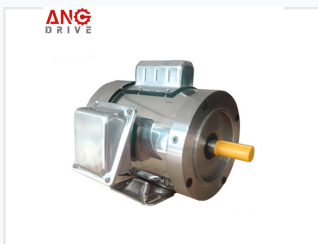


Stainless Steel Washdown Duty Electric Motor

This stainless steel electric motor is designed for washdown duty applications. It meets IEC and NEMA standards for reliable power and durability.



ADDITIONAL IMAGES



Overview



Engineered for high-performance in washdown environments, this motor features a fully sealed, smooth stainless steel exterior.

Washdown Duty Performance

Designed for maximum durability in harsh environments, this stainless steel electric motor is optimized for food processing, packaging, and outdoor applications requiring frequent washdown. Its completely smooth, corrosion-resistant surface ensures hygiene and longevity, while the low-noise and low-vibration design maintains operational efficiency. Built to withstand high-pressure cleaning, this motor provides a reliable, waterproof solution for demanding industrial settings.

Technical Specifications

Protection Class

IP69

Mounting Types

- B3
- B5
- B14
- B34
- B35

Power Range

1/4 HP to 30 HP

Frame Sizes

IEC 63-90 B5 B14, NEMA 56, NEMA 140T-280

Electrical Data

Available Poles

- 2
- 4
- 6
- 8

Phase

Single or Three Phase

Voltage

(208-230) 230/460V

Environmental & Construction

Operating Conditions

40 °C

Max Ambient Temp

1000 m

Max Altitude

Material

Stainless Steel 304

Cooling Method

TENV, TEFC