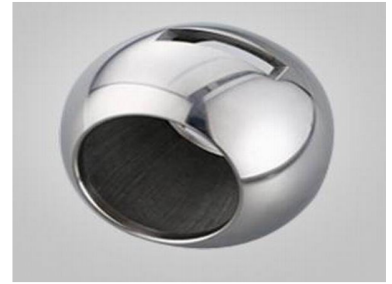


# Stainless Steel Valve Core for Fluid Control

This valve core is precision-engineered for fluid control applications. It is constructed from high-grade stainless steel, providing corrosion resistance and durability.



## ADDITIONAL IMAGES



## Product Overview

### Precision Fluid Control

This stainless steel valve core is engineered for critical fluid control applications, providing exceptional durability and reliable performance in demanding industrial settings. Its spherical design with a central bore ensures optimal flow characteristics, minimal pressure drop, and superior sealing. The polished surface finish significantly reduces friction and wear, making it an ideal choice for complex hydraulic, pneumatic, and process control systems.

## Technical Specifications

### Operating Temperature Range

**-196 °C**

Minimum Temperature

**350 °C**

Maximum Temperature

Size Range (NPS)	2-12
Size Range (DN)	50-300
Pressure Rating (Class)	150-600
Pressure Rating (PN)	16-100

## Compatibility & Performance

### Surface Treatment

- Electroless nickel plating
- Hard chromium plating

### Support Type

Valve seat

### Applicable Media

Water, Gas, Oil Products, Natural Gas, Acid Corrosive Medium, Alkali Corrosive Medium