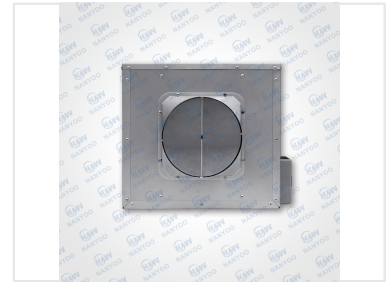
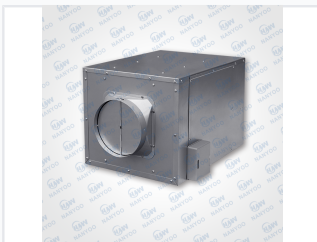


## Square Duct Fan

Square duct fans are designed for efficient air movement in duct systems. These fans feature a robust, square housing for easy integration into existing ductwork.



### ADDITIONAL IMAGES

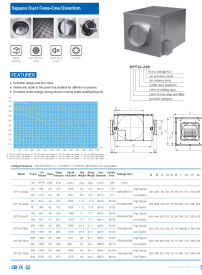


### Product Overview

#### High-Efficiency Ventilation Solutions

These square duct fans are engineered for efficient, one-directional airflow in ducted ventilation systems. Featuring a robust metal housing and an optimized impeller, they provide quiet operation, energy efficiency, and long-lasting performance. With multiple sizing and power configurations available, they are suitable for a wide range of commercial and industrial air handling requirements.

## Technical Specifications



Performance curves and model specifications for the duct fan series.

### Performance Models Overview

Model	Power (W)	Air Volume (m <sup>3</sup> /h)	Duct Diameter (mm)	Weight (kg)
DPT10-24B2	25	180	100	6.2
DPT15-42B2	80	500	150	11.2
DPT20-54C2	155	900	200	17
DPT20-75B2	255	1500	200	20.3
DPT25-76C2	335	1900	250	23
DPT25-76E2	485	2300	250	23

### Electrical Standards

220-240V/50Hz, 110V/60Hz, 110V/50Hz, 220V/60Hz

## Key Features

### Core Product Benefits

- Scientific design for minimized noise levels
- One-direction intake and outlet alignment
- High-efficiency motor for energy savings
- Stable construction for extended product life
- Versatile installation options for restricted spaces

### Performance Highlights

**2300 m<sup>3</sup>/h**

Max Air Volume

**250 mm**

Max Duct Diameter

**58 dB**

Max Noise Level