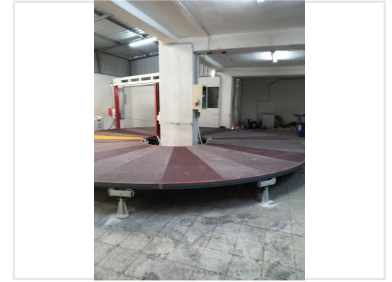


Sponge Angle Cutting Machine

This machine is designed for slicing foam rubber at precise angles. It is essential for manufacturing various specialized foam rubber products.



ADDITIONAL IMAGES



Product Overview

Industrial Sponge Cutting Precision

This specialized industrial machine is engineered for the precise bevel and angle slicing of foam rubber and sponge materials. Its robust construction ensures stability during continuous manufacturing operations, making it an essential tool for high-quality production. Designed for versatility, the machine accommodates various sponge thicknesses and complex cutting angles to meet diverse industry requirements.

Key Features

Core Functionalities

- Beveled angle slicing
- Adjustable cutting parameters
- Rotatable indexing platform
- Heavy-duty continuous operation
- High-speed precision blade

Suitable Industries

Furniture, Upholstery, Packaging, Insulation

Design & Safety

Safety Equipment

Safety Guards • User-friendly Controls • Robust Frame Construction