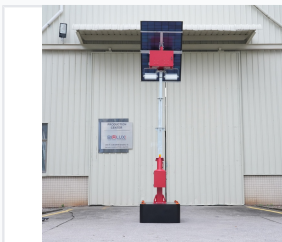


Solar Powered Mobile Light Tower with Adjustable Panel

This solar-powered light tower provides off-grid lighting for professional applications. It features a rotatable solar panel, LED floodlights, and a telescopic mast.



ADDITIONAL IMAGES



Overview

Professional Off-Grid Lighting Solution

This solar-powered mobile light tower provides a reliable, silent, and maintenance-free illumination solution for demanding outdoor environments. Engineered for versatility, it features a high-efficiency solar panel, a robust 2560Wh battery system, and a hot-dip galvanized telescopic mast for long-term durability. Designed for rapid deployment in construction, mining, and emergency response, the unit offers flexible lighting angles and smart control functions to ensure optimal performance in any location.

Technical Specifications



Integrated 2560Wh LiFePO4 battery module and control system for efficient power management.

Core Performance

2560 Wh

Battery Capacity

450 W

Solar Power

200 W

Total LED Power

Operational Specs

Metric	Value
Lighting Time	20 hours
Charging Time	5 hours
MPPT Controller	20A

Model	BL1P-L4MHGL0200
System Voltage	24 V

Construction & Mobility



Designed for easy mobility with forklift pockets and secure lifting points for rapid deployment.

Telescopic Mast

- Height: 3.5m - 4m
- Material: Hot-Dip Galvanized
- Lifting: Manual Winch

Physical Dimensions

- Transit: 1134 x 1100 x 3157.5 mm
- Deployed: 1134 x 1100 x 5221.5 mm
- Weight: 449 kg

Mobility & Stability	Forklift Pockets, 4 Lifting Rings, Hollow Weighted Base, Optional Outriggers
----------------------	--

Operational Features



The mobile light tower provides reliable illumination for various outdoor job sites.

Smart Control Functions

Manual Control • Timer • Light-sensing

Recommended Applications

Construction Sites, Mining & Oil Sites, Emergency Response, Outdoor Events, Parking Lots, Industrial