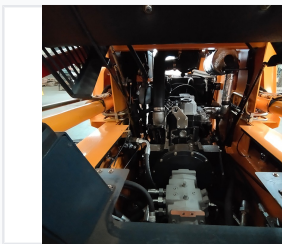


Skid Steer Loader Fork Grapple Grass Machine

This skid steer loader attachment is designed for grasping and transporting grass and other loose materials. Its hydraulic system provides precise control for efficient and damage-free handling.



ADDITIONAL IMAGES



Overview

Versatile Agricultural Material Handling

This skid steer loader is engineered for high-efficiency material handling in demanding agricultural environments. Featuring a robust chassis and specialized fork grapple attachment, it excels at grasping and transporting grass, hay, and other loose materials. The machine combines powerful lifting capabilities with an ergonomic, operator-focused design to ensure productivity and safety during daily operations.

Performance & Hydraulics

Hydraulic Components

- High-performance gear pump
- Hydraulic quick-couplers for attachments
- Pilot-operated joystick controls

Lift Type

Vertical Lift

Operator Environment

Optional Equipment

Seat Warmer • Air Conditioning

Cab Features

Enclosed Cabin, Front Door Seal, Ergonomic Controls, Anti-Collision Cage, Seat Belt

Chassis & Construction

Structural Highlights

- Reinforced chassis design
- High-strength steel fork grapple
- Heavy-duty tires for terrain traction

Maintenance & Usability

Maintenance Access

Simplified access via upper and back hood without moving loading arms