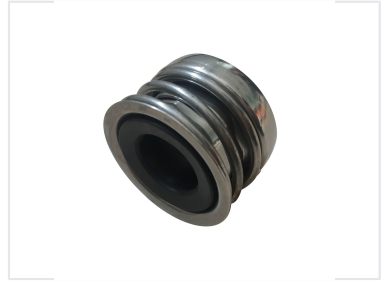


Single Spring Ceramic Seal for Water Pumps

This single spring mechanical seal is designed for water pumps. It features a ceramic sealing face and robust spring mechanism to prevent leakage in pumping applications.



ADDITIONAL IMAGES



Product Overview

Description

Technical diagram illustrating the single spring design.

High-Performance Mechanical Seal

This single spring mechanical seal is engineered for superior performance in water pump applications. Designed with a ceramic sealing face and robust construction, it offers excellent wear resistance, low friction, and reliable sealing effects. It is an ideal solution for diverse industrial, automotive, and chemical pumping systems, ensuring long-term durability and easy maintenance.

Key Features

Benefits & Features

Wear Resistant, Low Friction, Easy Replacement, Customizable, Superior Sealing

Technical Specifications

Product photo

High-quality ceramic sealing face designed for durability.



Seal featuring a stainless steel bellows spring for enhanced corrosion resistance.

Operating Parameters

1.2 Mpa

Max Pressure

3000 rpm

Max Speed

| | |
|-------------------|-----------------|
| Temperature Range | -40°C to +180°C |
| Dimension Range | 18mm - 100mm |
| Model Number | HF166-5/8 |

Applications

Suitable Industries

- Automotive
- Industrial Pumps
- Chemical Processing
- Water Treatment
- HVAC & Refrigeration

Logistics & Support



Professional packaging ensures product integrity during transit.

Service & Quality

- OEM/ODM Services Available
- Free technical drawings for mass production
- 1-year quality guarantee
- Video technical support
- 100% testing before packaging

Shipping & Packaging

| Category | Details |
|------------------|---|
| Packaging | Exquisite, rust-proof, individual small boxes |
| Payment Methods | T/T, Western Union, PayPal |
| Delivery Options | Express (FedEx, TNT, UPS, EMS) |