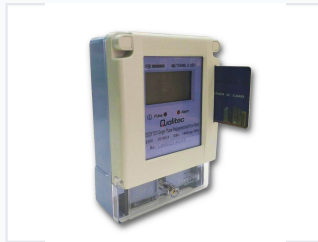


# Single-Phase Prepaid Electricity Meter

This single-phase prepaid electricity meter is designed for residential or commercial electricity metering. It features a digital display, pulse and alarm indicators, and a card reader for prepaid credit.



## ADDITIONAL IMAGES



## Product Overview

### Professional Grade Prepayment Metering

This single-phase static watt-hour meter is designed for precise energy consumption measurement in residential and commercial environments. It features a robust digital interface for clear reading and utilizes advanced card reader technology for seamless prepaid credit management. Engineered for reliability, this device complies with international standards to ensure accurate billing and durable performance.

## Technical Specifications

### Pulse Constant

**1600 imp/kWh**  
Pulse Constant

Rated Voltage	230 V
Frequency	50 Hz
Current Rating	10(40)A / 0.25-10(60)A

## Compliance & Certification

### Available Models

- DDSY 1531
- DDS1531
- DDS1531N
- DDS1531E
- DDS1531H

Certified Standards	GB/T18460.3-2001, GB/T17215.321-2008, TS EN 62056-21
---------------------	--