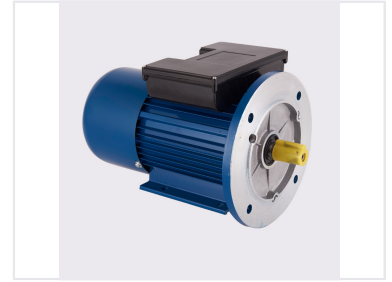
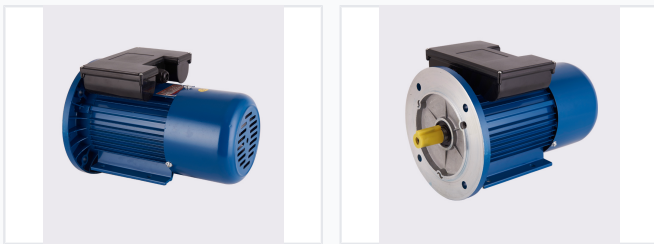


# Single-Phase Asynchronous Electric Motor

This single-phase asynchronous motor is designed to meet Russian standards. It features a robust construction with a finned body for efficient heat dissipation and reliable performance in various industrial applications.



## ADDITIONAL IMAGES



## Product Overview

### APE Series Asynchronous Motor

The APE series is a robust single-phase asynchronous motor designed to meet high-performance industrial standards. Built with a finned body for superior heat dissipation, these motors feature 100% copper windings for reliability and efficiency. Available in a wide range of mounting configurations and power ratings, this series is engineered to support demanding industrial and commercial applications.

## Technical Specifications

### Rated Power Range

**0.09 kW**  
Min Power

**315 kW**  
Max Power

### Available Poles

- 2
- 4
- 6
- 8
- 10

### Flange Sizes

50, 56, 63, 71, 80, 90, 100, 112, 132, 160, 180, 200, 225, 250, 280, 315, 355

### Mounting Options

B3, B5, B35, B14, B34

## Compliance and Quality

### Certifications

CE • CCC • ISO 9001:2015 • GB/T 19001-2006

### Efficiency Class

- IE1
- IE2