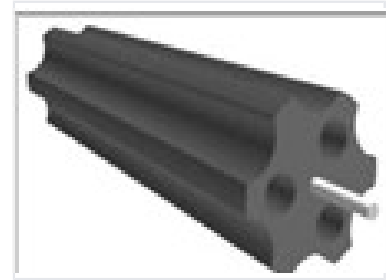


# Self-Priming Multi-Channel Pump

This self-priming pump features a multi-channel design with internal cylindrical bores. The design incorporates external fluting for increased surface area, potentially for heat dissipation or structural reinforcement.



## Product Overview

### High-Efficiency Multi-Channel Design

This self-priming multi-channel pump is engineered for robust performance and fluid management in demanding environments. Featuring specialized internal cylindrical bores and an advanced multi-channel architecture, it offers reliable displacement capabilities. The unit is designed with external fluting to assist in structural reinforcement and effective heat dissipation, ensuring operational longevity.

## Technical Specifications

|              |                                           |
|--------------|-------------------------------------------|
| Priming Type | Self-priming                              |
| Mechanism    | Multi-channel, Internal cylindrical bores |

## Construction & Design

### Key Features

- External cooling fluting
- Internal displacement shaft
- Reinforced structural body

|               |                            |
|---------------|----------------------------|
| Body Material | Durable composite material |
|---------------|----------------------------|