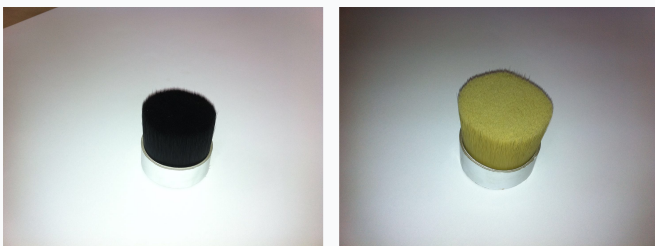


# Round Bristle Brush with Metal Ferrule

This round brush features densely packed bristles set in a metal ferrule. It is suitable for various tasks requiring precise and controlled application of liquids or powders.



## ADDITIONAL IMAGES



## Product Overview

### Professional Round Bristle Brush

This round bristle brush is engineered for precision and durability, featuring high-quality boiled bristles that offer enhanced resistance to wear. The design incorporates a robust metal ferrule that ensures the bristles remain securely packed, preventing shedding during intensive use. Ideal for a wide range of tasks, this tool provides excellent control for applying liquids, pastes, and powders across art, cleaning, and industrial applications.

## Technical Specifications

Bristle Treatment	Boiled
Ferrule Material	Metal
Shape	Round / Cylindrical

## Applications

Suitable Applications	Art, Cleaning, Industrial, Liquid Application, Paste Application, Powder Application
-----------------------	--

## Performance Features

### Key Benefits

- Enhanced durability through boiled bristles
- Robust metal ferrule prevents shedding
- Densely packed bristles for precise control
- Resistance to wear for long-lasting performance