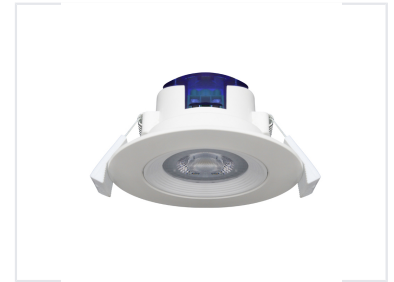


Rotatable LED Downlight

This LED downlight offers a rotatable design, providing users with directional lighting control. Its efficient LED light source ensures long-lasting performance and energy savings.



ADDITIONAL IMAGES



Product Overview

Versatile Lighting Solution

This rotatable LED downlight is designed for both residential and commercial environments, offering superior directional lighting control. Featuring an exquisite design, it ensures excellent heat dissipation and stable lumen output for a long-lasting, energy-efficient performance. It serves as a modern, high-quality replacement for traditional spotlights, seamlessly integrating into various ceiling types.

Technical Specifications

Design Features	Rotatable, Modern Aesthetic, White Finish, Directional Control
Installation	Spring clip mounting

Performance

Driver Technology	High-Quality Built-in Driver
Heat Dissipation	Yes

Applications

Suitable Applications

- General lighting
- Accent lighting
- Task lighting
- Residential spaces
- Commercial interiors