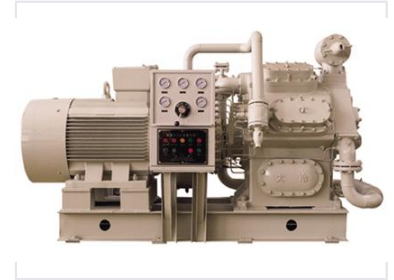


Reciprocating Refrigeration Compressor Unit

This reciprocating refrigeration compressor unit offers efficient and reliable performance. It is designed for industrial cooling applications, ensuring durability and ease of maintenance.



Product Overview

Industrial Refrigeration Excellence

This reciprocating refrigeration compressor unit represents over 40 years of engineering refinement, balancing high efficiency with minimized running costs. Designed for professional reliability, the unit features simplified operation and streamlined maintenance protocols. It is ideally suited for marine environments, providing consistent performance for food preservation, freezing, and climate control.

Operational Performance

Evaporative Temperature Range	-70 to +5
Applications	Food Preservation, Freezing, Refrigerating, Low-temp Processing, Marine Air Conditioning

Technical Construction

Core Components

- Multi-cylinder compressor block
- Integrated control panel
- Electric motor with finned housing
- Vibration-dampened base mounting
- Precision pressure monitoring system