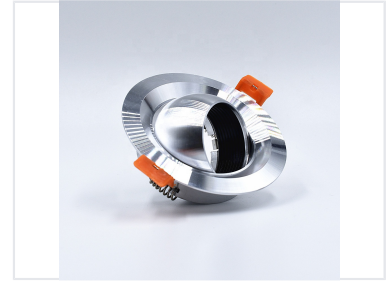


# Recessed Adjustable Spot Light Fixture

This recessed spotlight fixture features an adjustable inner ring for directional lighting. It is designed for indoor use with LED or halogen bulbs and includes mounting clips for secure installation.



## ADDITIONAL IMAGES



## Product Overview

### Professional Recessed Adjustable Spotlight

This high-quality recessed spotlight features a sophisticated circular design with a brushed metal finish, perfect for indoor commercial or residential applications. The fixture is equipped with an adjustable inner ring, allowing for precise light direction to highlight specific architectural features or display areas. Designed for versatility, it supports both LED and halogen bulbs and utilizes secure spring-loaded clips for reliable installation in ceilings or walls.

## Technical Specifications

Installation	Recessed ceiling or wall mount
Adjustability	Swiveling inner section
Bulb Compatibility	LED, Halogen

## Design and Build

### Design Features

- Circular design
- Concentric outer rings
- Ribbed texture inner ring
- Reflective inner section

Finish	Brushed Metal / Silver
--------	------------------------

## Installation Components

Mounting Clips	Spring-loaded orange clips
----------------	----------------------------