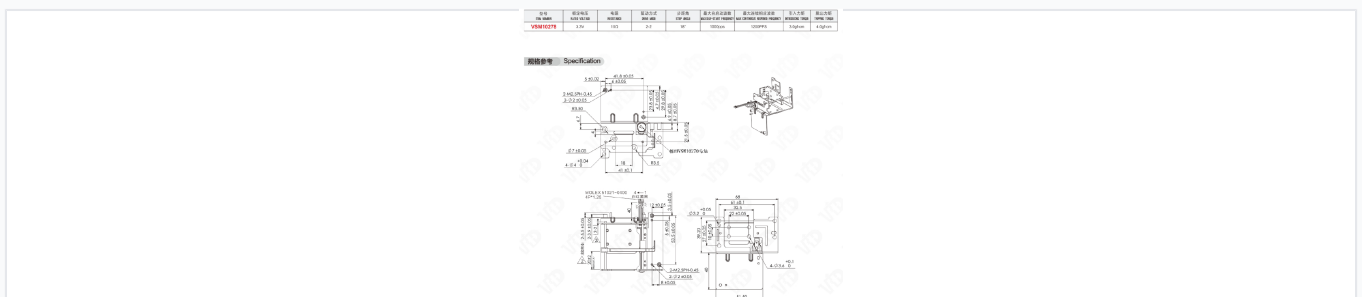


# Projector Motorized Positioning Module

This precision-engineered module is designed for business automation equipment, specifically projectors. It incorporates both mechanical and electrical components for precise movement or positioning within the projector's optical system.



## Product Overview



Technical drawing and specification reference for the VSM10278 module.

## Precision Positioning Module

The VSM10278 is a precision-engineered motorized positioning module designed specifically for business automation equipment, such as projectors. It features a robust metal frame construction that ensures long-term durability and stability within complex optical systems. This compact unit integrates electrical and mechanical components, including a motor and wiring, to facilitate accurate movement and alignment.

## Electrical Specifications

Rated Voltage	3.3 V
Resistance	100 $\Omega$
Drive Mode	2-2

## Performance Metrics

### Key Performance Metrics

**18 °**

Step Angle

**1000 pps**

Max Self-Start Frequency

**1200 PPS**

Max Continuous Response Frequency

## Torque Specifications

### Torque Performance

Metric	Value
Introducing Torque	3.0 gf-cm
Tripping Torque	4.0 gf-cm

## Connectivity and Integration

Connector Type	MOLEX 51021-0400 4P*1.25
Wiring Colors	White, Red, Yellow, Black