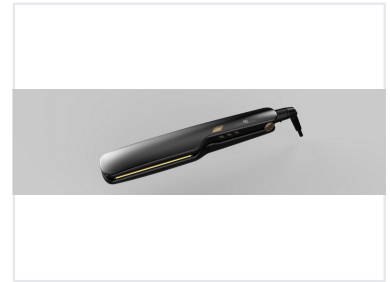
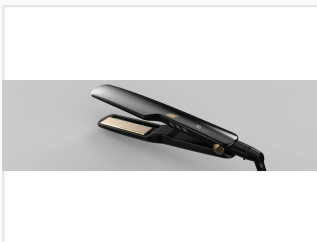


# Professional Hair Straightening Iron with Adjustable Temperature

This professional hair straightener uses advanced heating technology to ensure consistent temperature for smooth styling. It features adjustable temperature settings, rapid heat-up time, and ceramic plates for even heat distribution, minimizing hair damage and maximizing shine.



## ADDITIONAL IMAGES



## Overview

### Professional Styling Performance

This professional hair straightening iron is engineered for versatility and precision, making it an ideal choice for salon or personal use. Featuring advanced heating technology and ceramic-coated plates, it ensures consistent heat distribution to minimize damage while maximizing shine. With adjustable temperature settings and a digital display, users can achieve precise styling results on all hair types.

## Technical Specifications

Heating Technology	Advanced rapid heat-up
Plate Material	Ceramic-coated
Temperature Control	Yes
Display	Digital

## Design & Ergonomics

Cord Type	Swivel cord
Handle Design	Ergonomic, heat-resistant

## Safety & Features

### Styling Capabilities

- Straightening
- Curling
- Creating waves

Key Safety Features	Automatic shut-off, Heat-resistant handle
---------------------	---

## Performance Metrics

### Performance Highlights

**190 °C**

Operating Temp