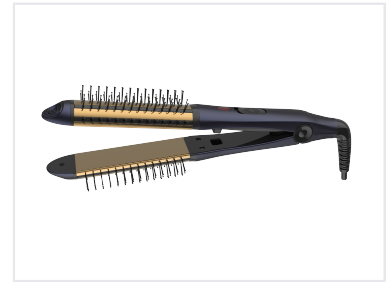


# Professional Hair Straightener with Brush

This professional hair straightener features brush attachments for versatile styling. It includes adjustable temperature settings, rapid heating technology, and ceramic-coated plates.



## Product Overview

### Professional Styling Solution

This professional hair straightener features an integrated brush design, combining detangling and smoothing capabilities in one tool. Equipped with advanced PTC heating technology, it ensures rapid and consistent heat distribution across the ceramic-coated plates. Designed for versatility and ease of use, it includes a lockable handle and a 360° swivel cord for seamless styling.

## Technical Specifications

### Maximum Temperature

**200 °C**

Max Temperature

### Temperature Tolerance

+/- 15°C

### Heating Element

PTC Heater

## Design & Build

### Coating

Ceramic Coating

### Plate Dimensions

32 x 107 mm

### Key Features

Integrated Brush, Lockable Handle, 360° Swivel Cord, ON/OFF Indicator