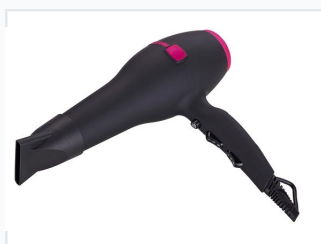


Professional Hair Dryer with Concentrator Nozzle

This hair dryer is designed for efficient and effective hair drying. It features multiple heat and speed settings, an ergonomic design, and a concentrator nozzle for precise styling.



ADDITIONAL IMAGES



Product Overview

Professional Performance

This professional-grade hair dryer is engineered for efficiency, featuring a powerful 2000W AC motor designed for high wind speed and rapid drying. It incorporates advanced technologies including tourmaline ionic, ceramic radiation, and keratin compatibility to promote healthier hair. With an ergonomic design and versatile settings, it provides salon-quality results suitable for various hair types.

Technical Specifications

Power Output

2000 W
Power

Motor Type

Professional A.C Motor

Noise Level

Low noise

Styling Features

Control Settings

- 3 Heat Settings
- 2 Speed Settings
- Cool Shot Setting

Hair Care Technology

Tourmaline Ionic • Ceramic Radiation • Keratin Compatible

Included Accessories

Concentrator Nozzle (2 styles), Diffuser

Maintenance & Design

Design Details

- Ergonomic handle
- Hanging loop
- Durable cord

Maintenance Features

Removable filter for easy cleaning