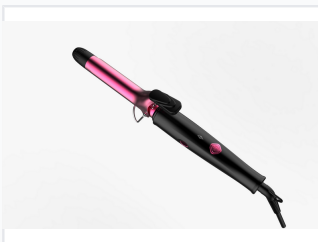


Professional Ceramic Curling Iron with Adjustable Temperature

This professional curling iron features a ceramic-coated barrel for even heat distribution and reduced hair damage. It includes adjustable temperature settings and an ergonomic handle for comfortable styling.



ADDITIONAL IMAGES



Product Overview

Professional Styling Performance

This professional-grade curling iron is engineered with a high-quality ceramic-coated barrel to ensure even heat distribution and minimize hair damage during styling. Designed for versatility and ease of use, it features an ergonomic handle and a swivel cord to prevent tangling. With rapid heat-up capabilities and adjustable temperature settings, it is an ideal tool for creating a wide range of styles, from tight ringlets to loose, voluminous waves.

Performance & Features

Temperature Settings

180 °C

Low Setting

210 °C

High Setting

Safety Features

Automatic Shut-off, Heat-Resistant Tip, Built-in Stand

Design & Build

Convenience Features

- Swivel power cord for tangle-free use
- Ergonomic handle design
- Rapid heat-up function

Barrel Material

Ceramic-coated