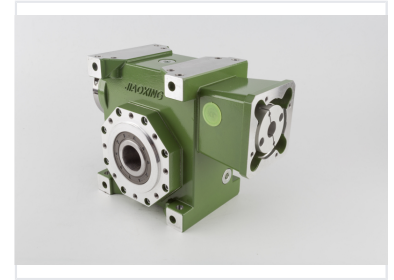
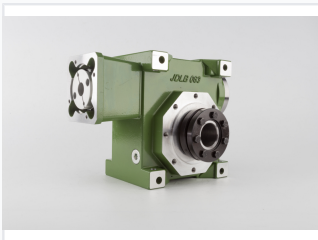


Precision Worm Gear Unit for Industrial Machinery

This precision worm gear unit is designed for smooth and efficient power transmission. Its robust construction and high-quality bearings ensure durability and reliability in harsh operating environments.



ADDITIONAL IMAGES



Product Overview

High-Precision Worm Gear Unit

This high-precision worm gear unit is engineered as a cost-effective, high-performance alternative to traditional planetary gearboxes. Designed for demanding industrial environments, it features robust construction with a rigid housing and precision-engineered internal components. It provides smooth, reliable rotary motion and efficient power transmission, making it an ideal solution for automation systems and robotics requiring precise motion control.

Technical Specifications

Recommended Applications

- Industrial automation systems
- Robotics
- Rotary motion control
- Power transmission systems

Series	JDLB
Model Variants	JDLB 063, JDLB63-30-C2, JDLE 063
Gearbox Type	Worm Gear

Key Features

Performance Highlights

1 High Precision Level	1 High Cost Efficiency
----------------------------------	----------------------------------

Design Advantages

Robust Construction • Versatile Mounting • Smooth Transmission • High Durability