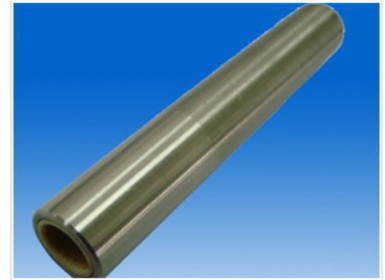


# Precision Steel Shaft for Linear Motion

High-precision steel shaft manufactured for smooth, reliable linear motion. It features a hardened surface for wear resistance and is suitable for linear bearings and automation equipment.



## Product Overview

### Precision Engineering for Linear Motion

This high-precision steel shaft is engineered to deliver smooth and reliable linear motion for demanding industrial applications. Manufactured from high-carbon chromium steel with a hardened surface, it offers exceptional wear resistance and an extended service life. The product is finished to a superior surface quality of Ra 0.2  $\mu\text{m}$ , making it an ideal component for linear bearings, automation systems, and precision machinery.

## Technical Specifications

### Surface Hardness

**60 HRC**  
Min Hardness

**64 HRC**  
Max Hardness

Material	High-carbon chromium steel
Surface Finish (Ra)	0.2 $\mu\text{m}$

## Application

Recommended Applications	Linear Bearings, Automation Equipment, Precision Machinery
--------------------------	--

## Availability

### Available Variants

- Various diameters available
- Customizable lengths