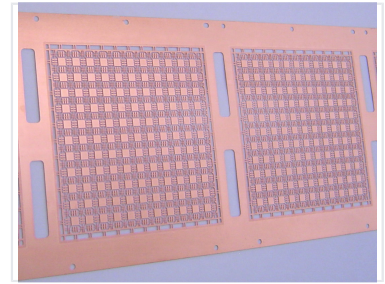


# Precision Copper Grid for Dimensional Measurement

This precision-engineered copper grid structure is designed for physical measurement applications. The intricate grid pattern provides a high-resolution reference for dimensional analysis and calibration.



## Overview

### Precision Dimensional Reference

This precision-engineered copper grid is designed specifically for high-accuracy physical measurement applications. Fabricated from a durable copper alloy, the grid offers a stable, high-resolution reference matrix essential for dimensional analysis and calibration tasks. Its robust construction ensures consistent performance when integrated into optical comparators, coordinate measuring machines (CMMs), and other advanced measurement systems.

## Technical Specifications

Material	Copper alloy
Feature Construction	Precision-etched
Key Features	Square cell matrix, Dimensional stability, Consistent thickness, Integrated mounting holes

## Applications

### Compatible Systems

- Optical comparators
- Coordinate measuring machines (CMM)
- High-precision measurement devices