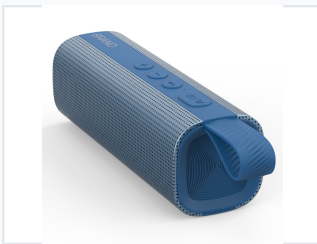


Portable Waterproof Bluetooth Speaker with Metal Grid

This portable Bluetooth speaker is designed with a durable metal grid and waterproof construction. It delivers 10W of audio output and includes integrated controls for convenient use.



ADDITIONAL IMAGES



Product Overview

Portable Audio Solution

The G12 Metal Grid Bluetooth Speaker is designed for durability and performance, featuring a robust metal grid exterior and waterproof construction. It delivers clear audio with strong bass, making it an ideal choice for both indoor and outdoor environments. With versatile connectivity options including Bluetooth, AUX, TF card, and U disk, this speaker adapts to various media sources seamlessly.

Technical Specifications

Output Power

10 W

Audio Output

Connectivity

- Bluetooth
- AUX Input
- TF Card
- U Disk

Key Features

Waterproof, Hands-free Calling, Mobile Charging Support, Strong Bass

Physical Attributes

Build Material

Metal Grid

Dimensions

183 x 60 x 60 mm