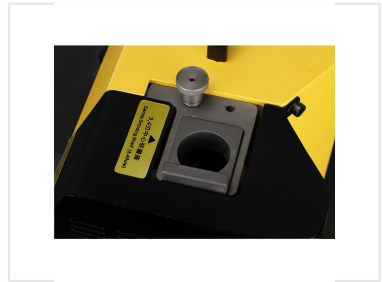


Portable End Mill Sharpener 4-14mm

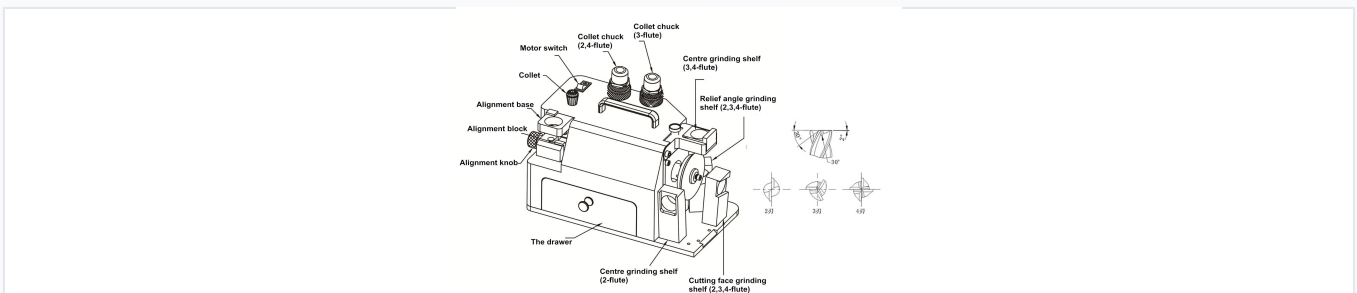
This portable end mill sharpener is designed for 2, 3, and 4-flute end mills. Grinding is accurate, rapid, and easy, requiring no special skills.



ADDITIONAL IMAGES



Product Overview



Detailed view of the grinder controls including collet chucks, alignment knobs, and various grinding shelves for 2, 3, and 4-flute tools.

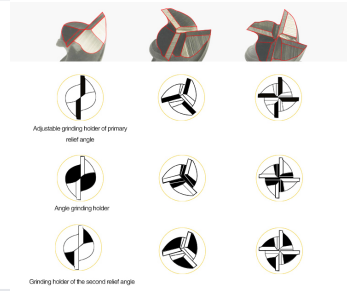
High-Precision Portable End Mill Sharpener

This portable end mill sharpener is designed for rapid and accurate grinding of 2-flute, 3-flute, and 4-flute end mills. It provides an easy-to-operate solution that requires minimal skill, ensuring consistent results for tool maintenance. Equipped with a durable diamond grinding wheel, it offers long service life and high precision, making it an essential tool for maintaining cutting performance in professional workshops.

Technical Specifications



The relief angle grinding shelf allows for precise angle adjustments for 2, 3, and 4-flute end mills.



Visual representation of the adjustable grinding holders for primary and secondary relief angles.

Operating Metrics

4400 rpm

Rotation Speed

160 W

Power Consumption

3 °

Point Angle

Physical Dimensions

Attribute	Value
Diameter Capacity	4-14 mm
Dimensions	35 x 25 x 25 cm
Net Weight	14 kg
Voltage	220 V

Equipment & Compatibility



Dedicated cutting face grinding shelf ensures accurate geometry for various flute counts.

Grinding Wheel Compatibility

SDC (Carbide - Standard) • CBN (HSS - Optional)

Included Collets

- 4
- 6
- 8
- 10
- 12
- 14