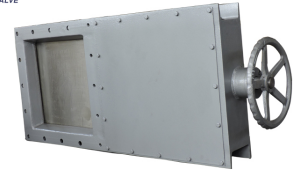


Pneumatic Square Knife Gate Valve for Water Systems



This knife gate valve features the same construction as a standard knife gate valve, but with a rectangular body and gate. It utilizes the same actuators and accessories as standard models and includes a rising stem tight model with square flange ends.

ADDITIONAL IMAGES



Product Overview

Industrial Pneumatic Square Knife Gate Valve

This pneumatic square knife gate valve is engineered for efficient flow control in demanding industrial environments. Featuring a robust square board design, it ensures reliable full-opening and full-closing capabilities for cutting off media in pipelines. Its pneumatic actuation allows for seamless integration into automated systems, making it an ideal solution for power, hydraulic, chemical, and mining applications.

Technical Specifications

Operating Temperature

0 °C

Min Temp

120 °C

Max Temp

Size Range

DN200xDN200 to DN1200xDN1200

Pressure Class

Class 150, PN6, PN10

Construction & Materials

Construction Materials

Component	Material Options
Body	Carbon steel, Stainless steel
Disc	Stainless steel, Carbon steel
Sealing	Rubber, Metal

Design Features

- Square flange ends
- Rising stem tight model
- Rectangular valve body and disc
- Standard actuator compatibility

Operational Data

Operating Mode

Pneumatic

Typical Applications

Power, Hydraulic, Petroleum, Chemical, Mining, Water Treatment, Food Processing

Commercial Details

Model	FRZ641H
Lead Time	30 days