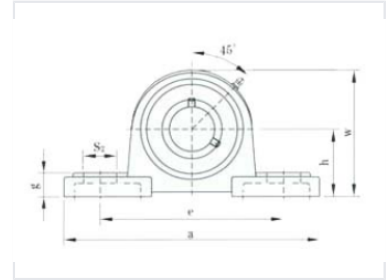


# Pillow Block Ball Bearing Unit

This pillow block ball bearing unit is designed for mounting on surfaces parallel to the shaft axis. The unit features a robust housing and a self-aligning bearing insert to accommodate shaft misalignment.



## Product Overview

### Pillow Block Ball Bearing Unit

The UCLP200 series pillow block ball bearing unit is engineered for reliable support in industrial applications. Designed for mounting on surfaces parallel to the shaft axis, this unit features a robust housing and a self-aligning bearing insert. Its design effectively accommodates shaft misalignment, ensuring smooth operation and durability in demanding environments.

## Technical Specifications

Series	UCLP200
Mounting Orientation	Parallel to shaft axis
Key Features	Self-aligning, Robust housing, Industrial grade