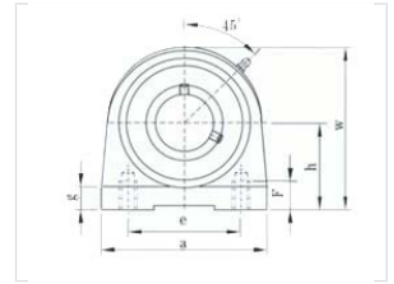


Pillow Block Ball Bearing Unit

This pillow block ball bearing unit is designed for mounting on surfaces parallel to the shaft axis. The unit features a robust housing and a self-aligning ball bearing insert to accommodate shaft misalignment.



Product Overview

Pillow Block Ball Bearing Unit

This pillow block ball bearing unit is engineered for reliable rotary motion support in various industrial applications. It features a robust housing design optimized for mounting on surfaces parallel to the shaft axis. The unit includes a self-aligning ball bearing insert, which effectively accommodates shaft misalignment during operation.

Technical Specifications

Design Features	Self-aligning, Parallel Mounting, Robust Housing
Grease Fitting Angle	45 degrees
Mounting Orientation	Parallel to shaft axis