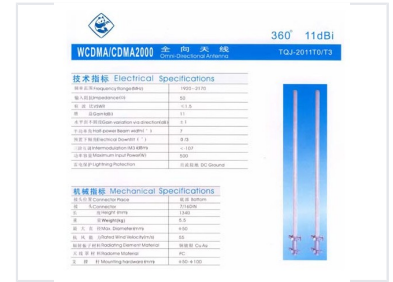


Omni-Directional Antenna for WCDMA/CDMA2000 Networks

This Omni-Directional Antenna is designed for WCDMA/CDMA2000 networks, operating in the frequency range of 1920-2170 MHz. It provides a gain of 11 dBi with a gain variation via direction of ± 1 dB.



Overview

High-Performance Omni-Directional Antenna

This omni-directional antenna is engineered specifically for WCDMA/CDMA2000 network applications, operating within the 1920-2170 MHz frequency range. Designed for durability and reliable signal distribution, it features a robust construction with a copper and silver radiating element and a polycarbonate radome. With an adjustable electrical downtilt and high power handling capabilities, this unit is an ideal solution for professional telecommunications infrastructure.

Electrical Specifications

Key Performance Metrics

11 dBi

Gain

500 W

Max Input Power

1.5

VSWR

Beamwidth & Tilt

Parameter	Value
Half-power Beamwidth	7 degrees
Electrical Downtilt	0-3 degrees

Lightning Protection

DC Ground

Frequency Range: 1920-2170 MHz

Impedance: 50 Ω

Mechanical Specifications

Physical Dimensions

- Height: 1340mm
- Max Diameter: 50mm
- Weight: 5.5kg

Construction Materials: Copper and Silver (Cu Ag), Polycarbonate (PC)

Connector: 7/16DIN (Bottom)

Rated Wind Velocity: 55 m/s

Mounting Hardware Diameter: 50-100mm