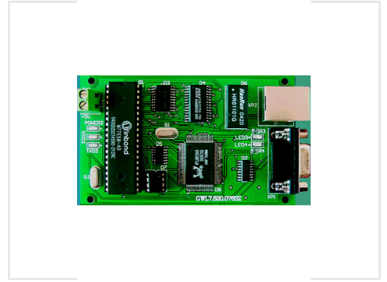


Network Communication Module with Winbond Microcontroller

This network communication module incorporates a Winbond W77E58-40 microcontroller and a HanRun HR61101G network interface. It is designed for network connectivity and data transmission applications.



Overview

Network Communication Module

This network communication module is engineered for reliable data transmission and connectivity in industrial applications. Built around a high-performance microcontroller and integrated network interface, it provides a robust foundation for networked systems. The board features clear LED status indicators and multiple connection points to facilitate seamless integration into existing communication infrastructures.

Technical Specifications

Microcontroller	W77E58-40
Network Interface	HR61101G
PCB Identifier	GWL7.820.07682

Connectivity & Interfaces

Key Hardware Components

- Winbond W77E58-40 Microcontroller
- HanRun HR61101G Network Interface
- LED Status Indicators
- Power Input Port
- RX02 Communication Port

Available Connectors	Power Connector, RX02 Connector, Network Interface
Status Indicators	Yes