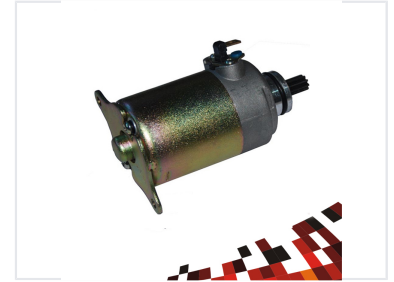


Motorcycle Starter Motor

This starter motor is designed for motorcycle engines, providing reliable power. It features durable components for efficient and consistent engine starts.



Product Overview

High-Performance Starting Power

This high-performance starter motor is engineered specifically for motorcycle engines, providing reliable and consistent starting power. Built to withstand demanding applications, it features a robust armature, high-quality brushes, and durable housing designed for an extended service life. This unit ensures quick and efficient engine starts, directly contributing to enhanced overall motorcycle performance and reliability.

Technical Specifications

Key Components

- Robust armature
- High-quality brushes
- Durable housing

Application

Motorcycle Engine

Performance Benefits

Reliable starting, Quick start, Efficient operation, Extended service life