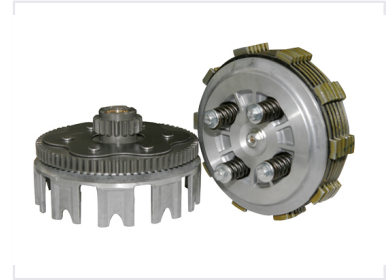


Motorcycle Clutch Assembly

This motorcycle clutch assembly is a crucial part of the transmission system. It consists of a clutch basket, clutch plate pack, and pressure plate with springs.



Overview

High-Performance Clutch Assembly

This motorcycle clutch assembly is engineered for reliable power transfer and smooth operation. The system features a durable clutch basket, a comprehensive friction and steel plate pack, and a robust pressure plate with high-tension springs. Designed for consistent engagement, this assembly is built to withstand the rigors of motorcycle operation while maintaining optimal friction coefficients.

Technical Construction

Component Materials

Component	Typical Material
Clutch Basket	Aluminum or Steel
Pressure Plate	Steel

Included Components

- Clutch basket with gear
- Friction plates
- Steel separator plates
- Pressure plate
- Clutch springs

Performance Features

Key Attributes

High Friction Coefficient, Smooth Operation, Durable Construction