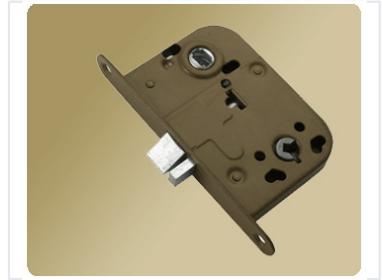


Mortise Lock Mechanism for Interior Doors

This mortise lock mechanism is designed for interior doors. It features durable metal construction with a bronze finish, suitable for residential and commercial settings.



Product Overview

Professional Mortise Lock Mechanism

This robust mortise lock mechanism is engineered specifically for interior doors in both residential and commercial environments. Constructed from durable metal with an elegant bronze finish, it offers a reliable security solution without compromising on aesthetics. Designed for smooth, consistent operation, this lock features a standard rectangular bolt and a precise key cylinder opening.

Technical Specifications

Application	Interior Doors
Finish	Bronze
Material	Durable Metal

Features

Key Features

- Rectangular bolt design
- Standard key cylinder opening
- Smooth operation mechanism
- Residential and commercial compatibility

Suitable Environments	Residential, Commercial
-----------------------	-------------------------