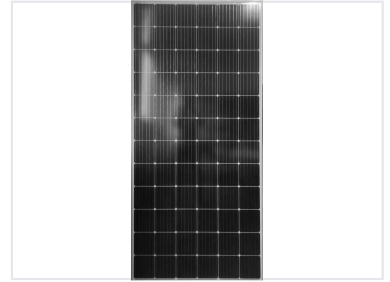


# Monocrystalline Silicon Solar Panel

This high-efficiency photovoltaic solar panel is designed for converting sunlight into electricity. Constructed with monocrystalline silicon cells, the panel offers superior performance and durability.



## Product Overview

### High-Efficiency Solar Solution

This monocrystalline silicon solar panel is engineered for optimal performance in diverse environments. Featuring a bypass diode system, it effectively mitigates power loss due to shading. Built with robust materials including tempered glass and an anodized aluminum frame, it ensures long-term durability and weather resistance for grid-tied applications.

## Technical Specifications

### Key Features

- Bypass diode for shade compensation
- Weatherproof encapsulation
- Anodized aluminum frame
- White tempered glass surface

Cell Type	Monocrystalline Silicon
Durability Profile	Waterproof, Weatherproof, Tempered Glass, Anodized Aluminum

## Warranty and Certifications

Product Guarantee	10 years
-------------------	----------