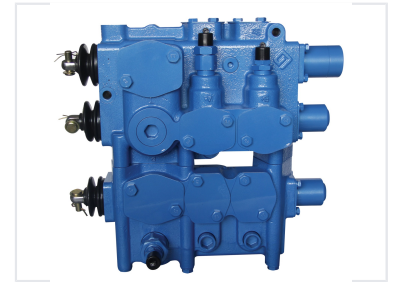
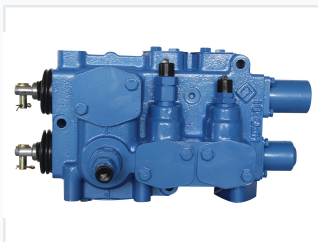


Monoblock Directional Control Valve

This monoblock directional control valve is mechanically operated and features low actuation force. The hydraulic valve is equipped with a safety valve, overload valve, and charging valve for easy maintenance in a wide range of applications.



ADDITIONAL IMAGES



Product Overview

High-Performance Hydraulic Control

This monoblock directional control valve is engineered for precise fluid flow management in heavy-duty machinery. Available in 2 or 3-section configurations, it utilizes a mechanically operated spool system with low actuation force for smooth, reliable operation. Designed for durability, the valve includes safety, overload, and charging valves to ensure efficiency in demanding industrial applications.

Performance Metrics

Parameters

Rated pressure (MPa)	25
Rated flow (L/min)	350 (maximum flow: 415 L/min)
Pressure range of main overflow valve (MPa)	10-25
Pressure range of secondary overflow valve (MPa)	15-31.5
Actuating force (N)	≤320
Hydraulic oil	Mineral oil (HL, HLP) in accordance with DIN 51 524
Fluid temperature range (°C)	-20-100
Viscosity range (mm ² /s)	10-380

Summary of hydraulic flow and pressure performance metrics.

Performance Highlights

25 MPa

Rated Pressure

350 L/min

Rated Flow

415 L/min

Max Flow Capacity

Technical Specifications

Pressure & Force Settings

Parameter	Range/Value
Main Overflow Valve Pressure	10-25 MPa
Secondary Overflow Valve Pressure	15-31.5 MPa
Actuation Force	d320N

Fluid & Environment

- Fluid Compatibility: Mineral oil (HL, HLP) per DIN 51 524
- Operating Temperature: -20 to 100 °C
- Viscosity Range: 10-380 mm²/s

Configuration & Design

Core Features

Monoblock Construction, Serial-Parallel Connection, Parallel Connection, 3-4 Spool Positions, Stainless Steel Ball Spring Plunger

Applications

Recommended Use

- Wheel loader
- Bulldozer
- Agricultural machinery
- Material handling machinery