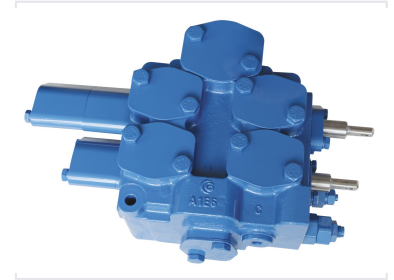


Monoblock Directional Control Valve

This monoblock directional control valve controls fluid flow. It is equipped with safety, overload, charge, and check valves, and is suitable for loaders, bulldozers, and agricultural machinery.



Product Overview

High-Performance Monoblock Directional Control Valve

This monoblock directional control valve is engineered for precise fluid flow management in demanding hydraulic systems. Available in 2 or 3-section configurations, it features a robust design equipped with integrated safety, overload, charge, and check valves to ensure reliable operation. Its versatile spool functions and multiple actuation methods make it an ideal solution for construction, agricultural, and material handling machinery.

Performance Metrics

Parameters

	GMV25	YGMV25
Rated pressure (MPa)	25	
Rated flow (L/min)	160 (maximum flow: 200 L/min)	
Pressure range of main overflow valve (MPa)	10-25	
Pressure range of secondary overflow valve (MPa)	15-31.5	
Hydraulic oil	Mineral oil (HL, HLP) in accordance with DIN 51 524	
Fluid temperature range (°C)	-20-100	
Viscosity range (mm ² /s)	10-380	
Fluid cleanliness	Not lower than GB/T 14039-93 level 19/16 or NAS 1638 level 10	
Weight (kg)	24 (2 sections)	38 (3 sections)
	INQUIRY	INQUIRY

Detailed technical parameters and operating specifications for the valve series.

Rated Flow

160 L/min
Rated Flow

200 L/min
Max Flow

Pressure Specifications

Parameter	Range (MPa)
Rated Pressure	25
Main Overflow Valve	10-25
Secondary Overflow Valve	15-31.5

Technical Specifications

Fluid & Operating Environment

- Hydraulic Oil: Mineral oil (HL, HLP) per DIN 51 524
- Fluid Temperature: -20 to 100 °C
- Viscosity: 10-380 mm²/s
- Cleanliness: GB/T 14039-93 level 19/16 or NAS 1638 level 10

Weight by Configuration

Model	Sections	Weight
GMV25	2	24 kg
YGMV25	3	38 kg

Control Features

Hydraulically operated, Mechanically operated, 3-position spool, 4-position spool, Serial-parallel connection, Parallel connection

Applications

Suitable Applications

Loader • Bulldozer • Agricultural machinery • Material handling machinery • Forestry machinery