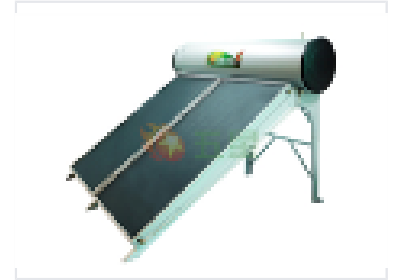


Modular Flat-Plate Solar Collector for Water Heating

This high-efficiency solar water heater features a modular flat-plate collector design. The system efficiently converts solar energy into heat for domestic hot water needs.



Overview

High-Efficiency Solar Water Heating

The Dragon series features a modular flat-plate collector design engineered for optimal solar absorption and durability. This high-efficiency system effectively converts solar energy into heat to meet domestic hot water requirements. Designed for residential applications, the system includes a dedicated storage tank to maintain water temperature consistently.

Key Features

System Highlights

- Modular flat-plate collector design
- High-efficiency solar energy conversion
- Integrated water storage tank
- Durable construction for long-term use

Application

Primary Application

Residential • Domestic Hot Water

Technical Design

| | |
|----------------|--------------------|
| Collector Type | Modular Flat-Plate |
|----------------|--------------------|