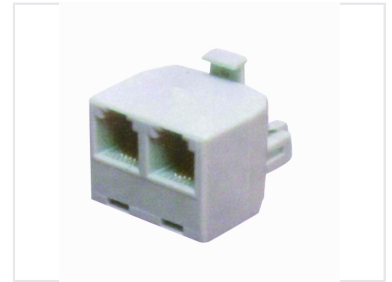
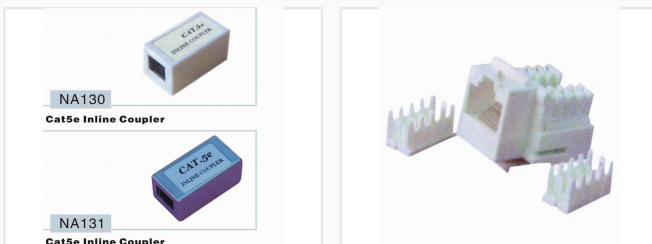


Modular Connector for Stranded and Solid Conductors

Modular connector designed for terminating stranded or solid conductors. Features include multiple contact points for reliable connections, robust housing for durability, and easy installation.



ADDITIONAL IMAGES



Overview

Versatile Modular Connectivity Solutions

This range of modular connectors is engineered to provide reliable and efficient electrical and data connections for both stranded and solid conductors. Designed for durability and ease of installation, these components ensure robust performance in demanding networking and electrical applications. Whether you need to terminate conductors, extend Ethernet lines, or split network signals, these connectors offer a versatile solution for professional infrastructure setups.

Electrical Specifications

Conductor Compatibility	Stranded, Solid
-------------------------	-----------------

Networking Components

Available Networking Models

Model ID	Description	Category
NA130	Inline Coupler	Cat5e
NA131	Inline Coupler	Cat5e

Splitter Configuration

- RJ45 Splitter
- Two RJ45 ports (input/output side)
- Single RJ45 plug (connection side)
- Enables two devices to share a single network connection