

# Mobile Solar Light Tower with LED Floodlights

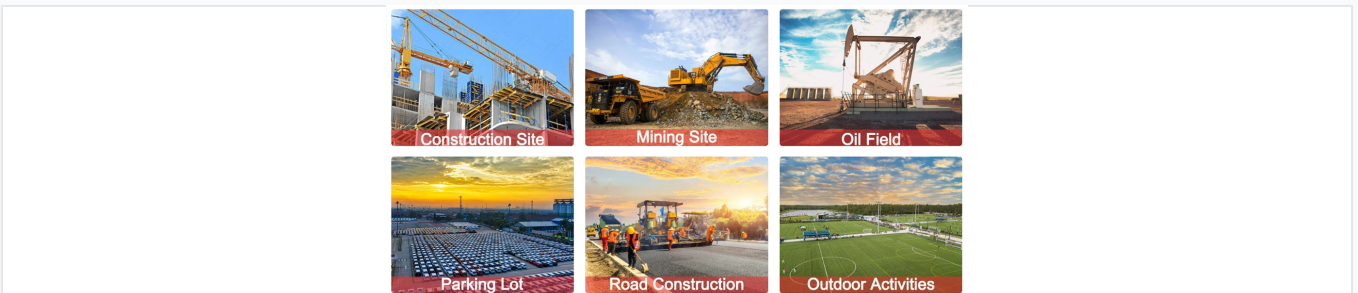
This mobile solar light tower provides off-grid outdoor illumination for temporary or remote locations. It features LED floodlights, solar panels, and batteries mounted on a trailer with a telescopic mast.



## ADDITIONAL IMAGES



## Product Overview



Versatile deployment for construction, mining, and outdoor events.

### Mobile Solar Light Tower

This mobile, off-grid solar light tower is engineered for reliable outdoor illumination in temporary or remote scenarios. It integrates high-efficiency bifacial solar panels, high-output LED floodlights, and large-capacity battery storage to deliver silent, maintenance-free lighting 24/7. Designed for rapid deployment, the trailer features a telescopic mast and rugged, hot-dip galvanized construction, making it an ideal sustainable solution for construction sites, mining operations, and emergency response.

## Performance Metrics



**HiSOLO Series**  
**Mobile Solar Light Tower**

- Silent, Simple, Steady
- 0 Fuel, 0 Maintenance, 0 Downtime
- One Investment, Long-Term Returns

Go Green Today, Brighter Future Tomorrow  
[View More ▶](#)

Silent, maintenance-free operation with zero fuel requirements.

### Key Performance Metrics

**90000 lm**

Max Luminous Flux

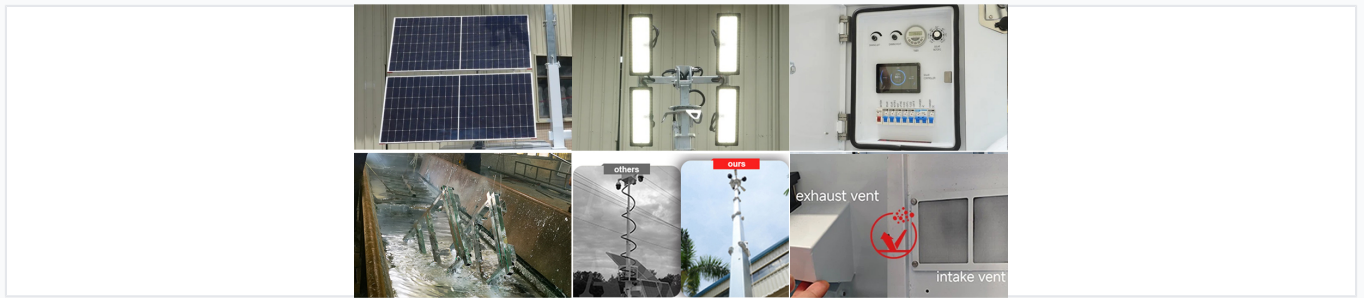
**24 hours**

Max Lighting Duration

**1200 W**

Max Solar Power

## Technical Specifications

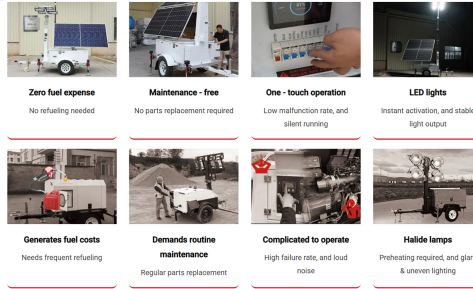


Integrated control panel with cooling and ventilation systems.

### Detailed Technical Specifications

Feature	Specification
Solar Panel Type	Monocrystalline Silicon, Dual Facial
Battery Options	GEL (9600Wh/12000Wh) or LFP (8038Wh/14336Wh)
Mast Height	6.5m (Manual) / 8.5m (Electric)
Operating Temperature	-20°C to 55°C
Trailer Type	Single Axle, US/EU/AU Standard

## Lighting & Solar System



Solar-powered towers offer lower operational costs and silent performance compared to diesel alternatives.

### System Capabilities

- Solar Panel: 180° rotation, 30°-60° electric tilt
- LED Light: 360° rotation, 0°-90° tilt
- IP65 waterproof and dust-proof rating
- Includes timer, light-sensing, and dimming functions

## Mobility & Durability

### Construction & Mobility

Hot-dip galvanized steel, Internal wiring protection, Foldable tow bar, Forklift holes, Lifting rings, Y-shaped manual outriggers