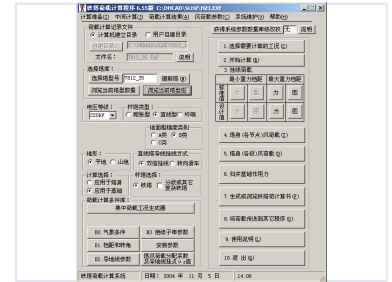


# Iron Tower Load Calculation Software

The Iron Tower Load Calculation System is a software program designed for calculating the load on iron towers. It features options for selecting calculation conditions, tower types, and load calculation parameters.



## Overview

### Professional Iron Tower Load Calculation System

This specialized software solution is engineered for precise load calculation on iron towers, essential for structural engineering and power grid infrastructure projects. Version 6.55 offers comprehensive tools for inputting critical parameters such as meteorological conditions, span and turning angles, and insulation string specifications. Designed for efficiency, the system supports complex tower modeling, wind load analysis, and seamless data transfer to other engineering programs.

## System Capabilities

### Core Calculation Functions

- Wind load calculation on tower body
- Load transfer to other programs
- Tower calculation book generation
- Concentrated load condition generation
- Foundation force aggregation

### Software Version

6.55

## Input Parameters

### Configurable Input Parameters

Meteorological conditions, Span and turning angles, Insulation string parameters, Ground wire parameters, Tower type selection

## Technical Specifications

### Supported Voltage Levels

220kV

### Supported Terrain

- Flat land
- Mountainous terrain

### Ground Roughness Categories

- Class A
- Class B
- Class C

### Tower Configuration Options

- Tension tower
- Straight line tower
- Terminal tower
- Complex iron tower