

Integrated Multiple Directional Hydraulic Valve

This integrated multi-way valve features a 2-slice design, expandable to 3 slices. The valve element utilizes fine-tuned grooves for progressive flow control, offering a wide flow rate and reduced commutation maneuverability with proportional pilot control.



Overview

High-Performance Integrated Hydraulic Control

The D32 series is a versatile integrated multi-way directional valve designed specifically for heavy-duty machinery like loaders and bulldozers. It features a modular 2-slice design that is expandable to 3 slices, offering exceptional flexibility for various hydraulic circuit requirements. With proportional pilot control and fine-tuned grooves, this valve ensures precise flow management and smooth maneuverability in demanding construction and agricultural environments.

Technical Performance

Key Performance Metrics

25 MPa

Rated Pressure

350 L/min

Rated Flow

415 L/min

Max Flow

Pressure Regulation Ranges

Component	Range (MPa)
Main Overflow Valve	10 ~ 25
Secondary Overflow Valve	15 ~ 31.5

Loop Configuration

Series Parallel, Parallel

Fluid Specifications

Cleanliness Standards

- GB/T 14039-93 19/16
- NAS 1638 Level 9

Recommended Fluid

Mineral oil (HL, HLP) in accordance with DIN 51 524

Oil Temperature Range

-20 to 100 °C

Viscosity Range

10 ~ 380 mm²/s

Applications

Main Application Areas

Loader • Bulldozer • Agricultural Machinery • Material Handling • Compactor • Forestry Machinery • Container Crane

Physical Characteristics

Product Mass

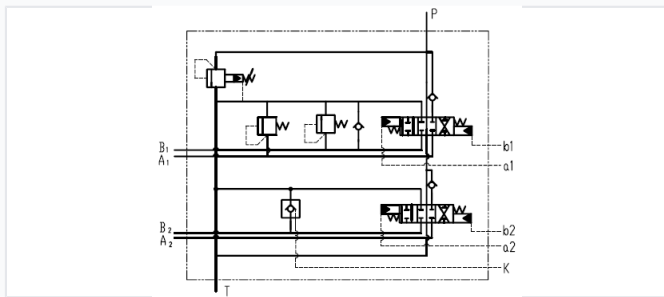
Model	Weight (kg)
D32	62
D32A	95

Design Features

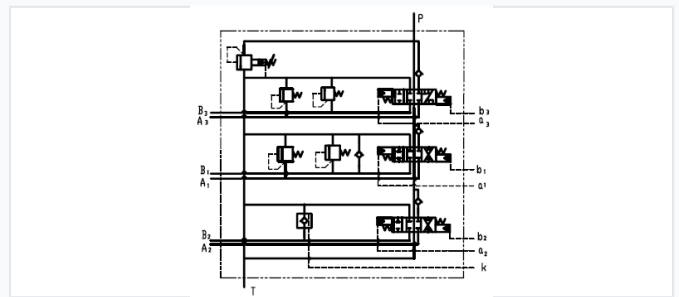
Built-in Components

- Main safety valve
- Overload valve
- Charge valve
- Check valve
- Plug-in structure for easy maintenance

Hydraulic Schematics



Hydraulic system schematic for the D32 standard model.



Hydraulic system schematic for the D32A model variant.

Configuration Note

Standard product schematic; relief valve number and pressure can be user-selected.